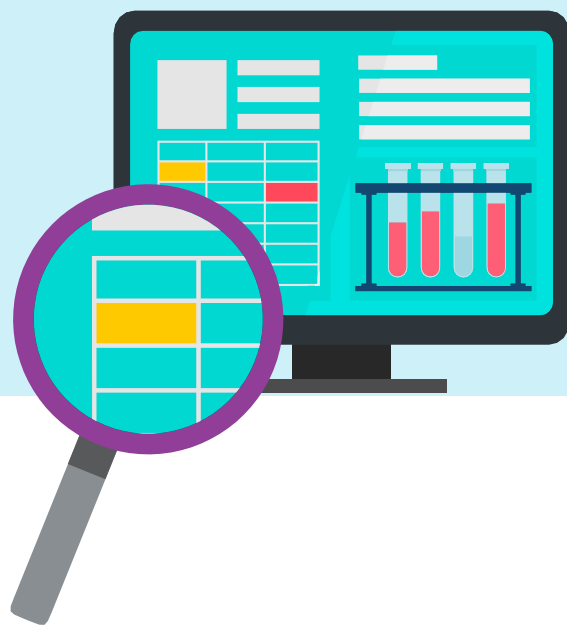


Is it possible to diagnose PH earlier?



A research study across UK specialist centers is aiming to discover whether looking at existing clinical data derived from people living with Pulmonary Hypertension (PH) might help earlier diagnosis for people in the future. PH is a rare disease which is defined as high blood pressure confined to the lungs.

The aim is to be able to paint a clear picture of the ‘natural history’ of breathlessness where pulmonary hypertension is suspected, allowing for earlier diagnosis and better outcomes.

This research involves accessing personal health records to obtain clinical data from tests you may have had at outpatient appointments; for example, echocardiograms, lung function, blood tests and walk tests.

We will not be seeking patient’s consent to access previous clinical data but will be using the national opt out process to identify potential patients who may not wish for this data to be disclosed.

If you have any questions or would prefer to opt out of us using your data, please speak with a member of your care team or contact us using details below

Email us at

Rf.phphenotyping@nhs.net



You can keep up to date with our research at

<https://www.phauk.org/get-involved-with-the-phauk/research-survey-work/research-is-it-possible-to-diagnose-ph-earlier/>

